



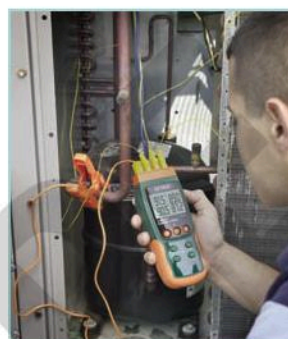
## 4-Channel Datalogging Thermometer



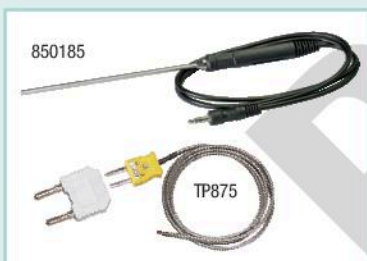
**Records data on an SD card in Excel® format**  
For easy transfer to a PC for analysis

### Features:

- 4-Channel datalogging with 6 Thermocouple types (J, K, E, T, R, S) and 2-Channel datalogging with RTD (Pt100Ω) probes
- Displays [T1, T2, T3, T4] or differential [T1-T2] reading
- Offset adjustment used for zero function to make relative measurements
- Stores 99 readings manually and 20M readings via SD card included
- Records readings with real date and time stamp
- User programmable sampling rate: 1 to 3600 seconds
- Min/Max and Data Hold functions
- Auto power off with disable function
- Complete with 6 AA batteries, four general purpose Type K bead wire temperature probes, SD card, and hard carrying case



Simultaneously measures 4 temperature inputs for multiple source monitoring



### Optional Temperature Probes:

Model TP875 — Optional Type K Bead Wire Temperature Probe measures from -58 to 1000°F (-50 to 538°C) with subminiature connector. Includes a banana adaptor connector for use with meters with banana adaptor inputs.

Model 850185 — Optional RTD (PT100) Temperature Probe measures from (-22 to 482°F/-30 to 250°C).

Model TP200 and TP400 — Optional Type K Pipe Clamp Temperature Probe for hands-free superheat/sub-cooling temperature measurement from -4°F to 200°F (-20°C to 93°C) for TP200 and -4 to 450°F (-20 to 232°C)

Visit [www.extech.com](http://www.extech.com) for a wide selection of Temperature Probes including Penetration and Surface Probes.

### Specifications

Type J	-148 to 2102°F (-100 to 1150°C)
Type K	-148 to 2372°F (-100 to 1300°C)
Type T	-58 to 752°F (-50 to 400°C)
Type E	-58 to 1652°F (-50 to 900°C)
Type R	32 to 3092°F (0 to 1700°C)
Type S	32 to 2732°F (0 to 1500°C)
RTD (Pt100)	-327 to 1562°F (-200 to 850°C)
Resolution	0.1°F/1°
Basic Accuracy	±0.4% rdg (+1.8°F/+1°C) Types J,K,E,T, Pt100 ±0.5% rdg (+2°F/+1°C) Types R,S
Datalogging	20M data records using a 2G SD card
Dimensions	7.2 x 2.9 x 1.9" (182 x 73 x 47.5mm)
Weight	17.6oz (500g)

### Ordering Information:

SDL200	4-Channel Datalogging Thermometer
SDL200-NIST	SDL200 w/Certificate of Calibration Traceable to NIST standards
872502	Type J Bead Wire Probe (-40 to 392°F/-40 to 200°C)
TP870	Type K Bead Wire Probe (-40 to 482°F/-40 to 250°C)
TP200	Type K Clamp Probe (-4 to 200°F/-20 to 93°F)
TP400	Type K Clamp Probe (-4 to 450°F/-20 to 232°C)
850185	RTD (PT100) Temperature Probe (-40 to 392°F/-40 to 200°C)
153117	117V AC Adaptor
UA100-240	100-240V AC Adaptor with 4 plugs (US, EU, UK, AU)